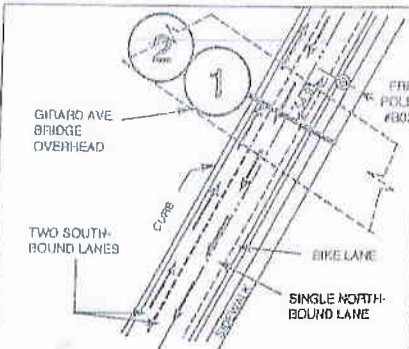
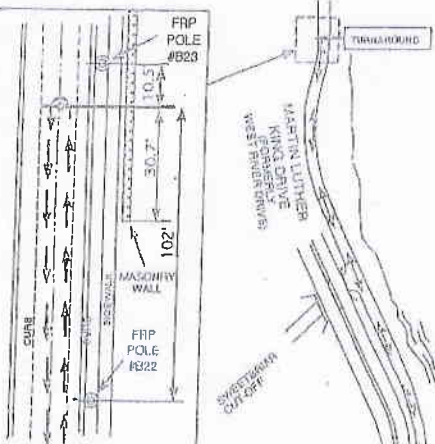


Sandy Sprint 5K Course Map

TURNAROUND: LOCATED ON MARTIN LUTHER KING DRIVE (FORMERLY WEST RIVER DR.), APPROX. 1200 FT NORTH OF CL. OF SWEETBRIAR CUTOFF, BUT MORE ACCURATELY 10.5 FT SOUTH OF FRP LIGHT POLE #B23, 30.7" NORTH OF THE SOUTH END OF THE MASONRY WALL, AND 102 FT NORTH OF FRP LIGHT POLE #B22, ALL ON THE EAST SIDE OF THE ROAD. MARKED BY A 6" DIAM. SPOT IN THE CENTER OF THE ROAD, A COUNTERCLOCKWISE ARROW INDICATING THE TURNING DIRECTION, AND A STRIPE ON THE TOP OF THE EAST CURB, WITH THE LETTERS 'RA' / '5K', ALL IN YELLOW PAINT.

APPROX. ELEV. = 25.0 FT. (7.6 METERS)



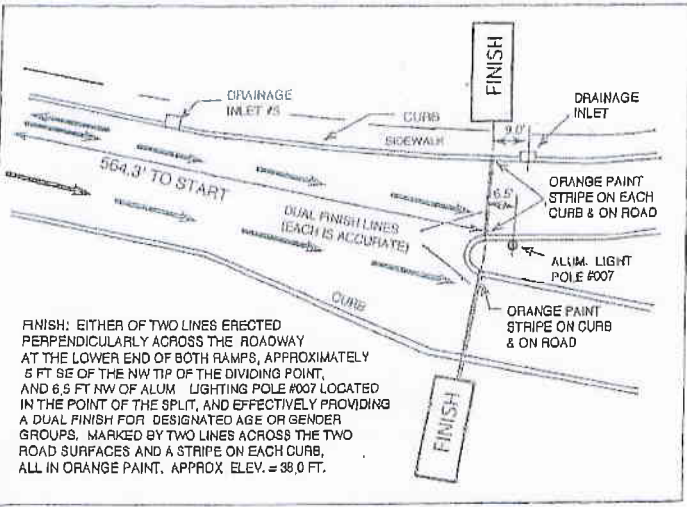
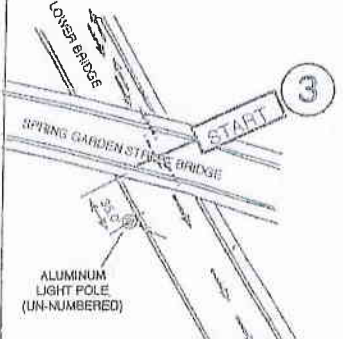
MILEPOINTS 1 & 2: ON THE W SIDE OF MARTIN LUTHER KING DRIVE (FORMERLY WEST RIVER DR.), AND LOCATED UNDER THE GIRARD AV. BRIDGE, MORE ACCURATELY 64.8 FT. SOUTH OF THE BROWN FIBERGLASS LIGHT POLE #B02 LOCATED ON THE EAST (RIVER) SIDE OF THE DRIVE. MARKED BY AN ORANGE PAINT STRIPE ON THE WEST CURB, WITH CIRCLED FIGURES '1' & '2' WITH 'RA' & '5K' ON TOP OF THE CURB ALSO IN ORANGE PAINT ON EITHER ENDS OF THE LINE.

APPROX. ELEV. = 24 FT.

USATF/BRTC Certification
Code: PA 05004 WB

100 0 500
SCALE (FEET)

START/MILE 3: LOCATED ON THE LOWER BRIDGE OVER THE SCHUYLKILL RIVER, DIRECTLY UNDER THE CENTER OF THE UPPER BRIDGE ABOVE, 884 FT. NW OF THE FINISH LINE(S) AND, AND MORE PRECISELY 85.0 FT. NW OF AN UNNUMBERED ALUM. LIGHT POLE LOCATED ON THE SW SIDE OF THE ROAD, MARKED BY A CIRCLED '3' NUMERAL '3' 12" OUT FROM THE NE CURB AND A STRIPE ON THE CURB, ALL IN ORANGE PAINT. APPROX. ELEV. = 34.0 FT.



FINISH: EITHER OF TWO LINES ERECTED PERPENDICULARLY ACROSS THE ROADWAY AT THE LOWER END OF BOTH RAMP, APPROXIMATELY 5 FT SE OF THE NW TIP OF THE DIVIDING POINT, AND 6.5 FT NW OF ALUM. LIGHTING POLE #007 LOCATED IN THE POINT OF THE SPLIT, AND EFFECTIVELY PROVIDING A DUAL FINISH FOR DESIGNATED AGE OR GENDER GROUPS, MARKED BY TWO LINES ACROSS THE TWO ROAD SURFACES AND A STRIPE ON EACH CURB, ALL IN ORANGE PAINT. APPROX. ELEV. = 38.0 FT.

